

MULTI-AIRE IIN

CENTRAL DUCTED EXHAUST SYSTEM



MULTI-AIRE IIN

- IMPROVED COMFORT
- SINGLE PENETRATION TO THE OUTSIDE
- REDUCE NEED FOR AIR CONDITIONING
- VENTILATE AT THE SOURCE
- DUCTED WHOLE HOUSE OR BATHROOM FAN
- WORKS WITH ALL TAMARACK AIRE FORCE CONTROLS
- 8.3 CFM/WATT ENERGY USAGE
- ONE 8" AND FOUR 4" PORTS WITH GASKETS
- MAX. AIR FLOW OF 500 CFM
- 120 VAC, 60HZ, .5AMP (FULL SPEED)
- QUIET OPERATION
- VARIABLE SPEED W/CONTROLS
- CAN BE INSTALLED IN CLOSET, LAUNDRY ROOM OR ATTIC

ECONOMICAL CENTRALIZED VENTILATION

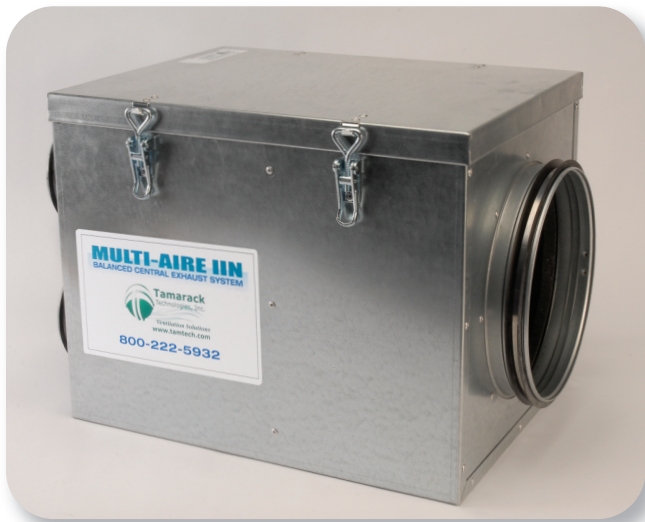
Multi-Aire IIN is the most cost effective way to achieve ventilation balance, replacing multiple bath fans and vents. The Multi-Aire IIN unit moves 500 CFM. It is a four port inlet with a single exhaust port. The port sizes are four, 4" inlet ducts along with a single 8" exhaust duct. This unit can be used as a mutli-port bathroom exhaust fan. It could also be used as a small whole house fan for home/condo of about 1000 sq. ft. or smaller. Please call for pricing and availability.



320 Main Street • Buzzards Bay, Ma 02532
508-759-4660 / 800-222-5932 / Fax 508-759-6001

MULTI-AIRE IIN

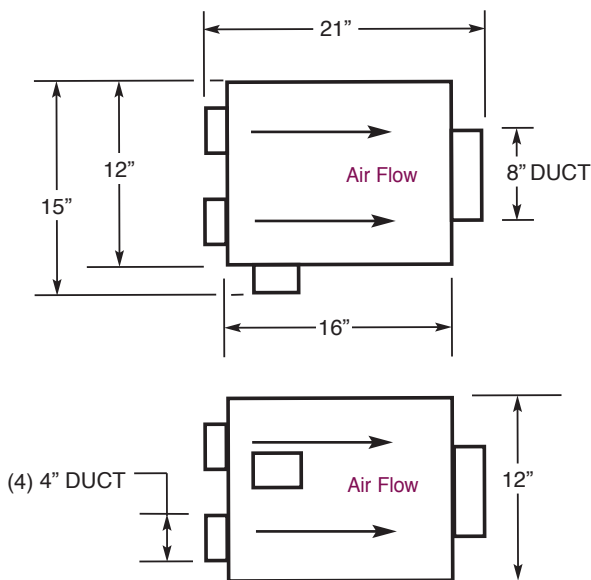
NEGATIVE AIR SUPPLY SYSTEM



SPECIFICATIONS

Electrical	
Voltage	115 VAC 60Hz
Power	Full Speed 60W.
Air Flow	500 CFM
Weights	Fan: 13 Lbs. Shipping: 23 Lbs.
Inlet	(4) 4" with Gaskets
Outlet	8" duct with Gasket

DIMENSIONS



- EXHAUST STALE AIR
- CAN BE USED AS WHOLE HOUSE VENTILATOR OR MULTI-BATHROOM EXHAUST FAN
- IDEAL FOR SMALL CONDO OR COTTAGE OF LESS THAN 1000 SQ. FT.
- CAN REDUCE USE OF AIR CONDITIONING, THUS REDUCING YOUR CARBON FOOTPRINT
- EASY TO INSTALL - ATTIC, CLOSET OR LAUNDRY ROOM
- CAN BE DUCTED TO THE OUTSIDE OR INTO YOUR ATTIC



Ventilation Solutions
www.tamtech.com

320 Main Street • Buzzards Bay, Ma 02532
508-759-4660 / 800-222-5932 / Fax 508-759-6001